

Swing retractable bow- and stern thrusters

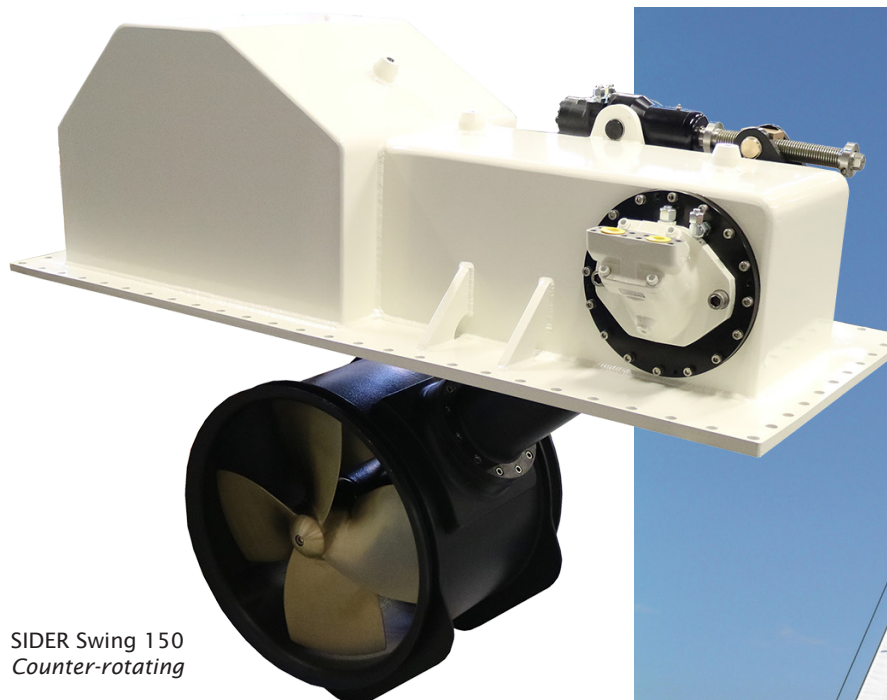


Technical

Up from 45 HP the Sider is also available in a retractable (Swing) version. Swing bow & stern thrusters are mainly used on sailing boats for which the hull of the boat should be closed when the unit is not in use. While the yacht is manoeuvring, the bow and stern thrusters are swung down so that the yacht can be moored. The section of the hull that opens is constructed to the outside of the tunnel of the thrusters. Each Swing is based upon a tailpiece with the same propellers that are used in a normal fix tunnel version of our standard bow thrusters. In the Swing version, a so-called extension arm is fitted on the mounting flange. The length of the extension arm in combination with the rotation angle is determined in consultation with the naval architect and depends upon the application. By the use of a bevel gear witch is fitted in the centre of the pivot the hydraulic motor can be fitted inside the yacht. The supply of a Swing includes a design process in which the specifications are established and the installation drawings to be delivered to our engineering team.

Materials

The Swing bow and stern thrusters can be supplied with an aluminium bronze or aluminium Sider. As a standard, the bow thruster housing is made of aluminium, the tailpiece of cast aluminium and the propellers of stainless steel or aluminium bronze.



SIDER Swing 150
Counter-rotating



Hydrosta BV
De Kalkovens 4
8064 PS Zwartsluis
The Netherlands

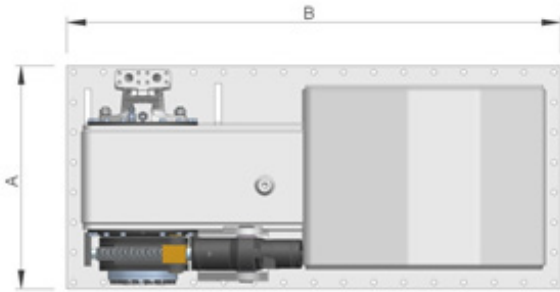
T +31 (0)38 386 64 64
E info@hydrosta.nl
W www.hydrosta.nl



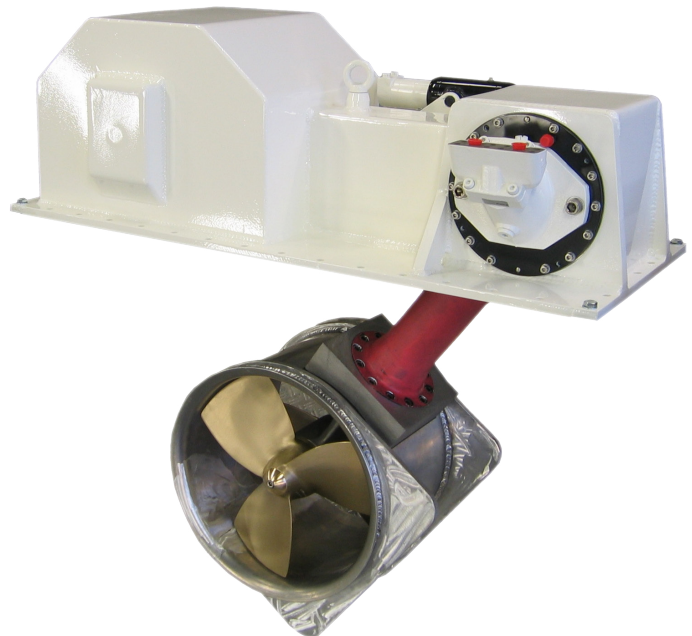
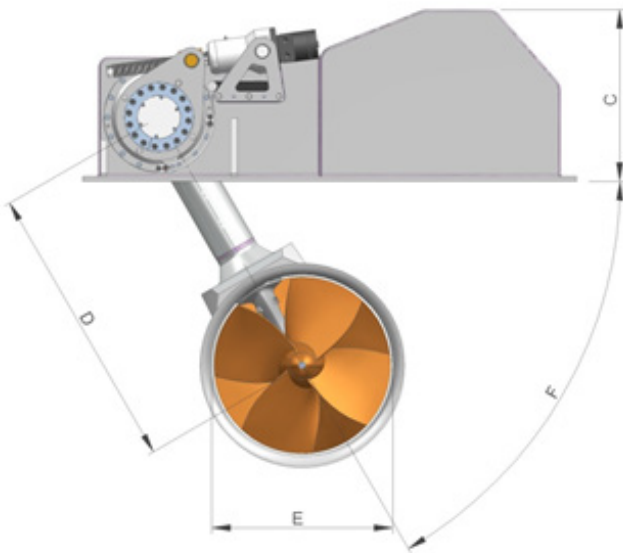
Dimensions (hydraulic driven)

As described in the technical paragraph, the precise dimensions of a Swing are determined in consultation with the naval architect. This documentation only gives the main dimensions.

Contact us for specific information and digital construction drawings.



Dimension	45/ 60 HP	80/ 100 HP	125/ 150 HP	175/ 200 HP
A mm	525	650	800	1000
B mm	1325	1500	1875	2000
C mm	450	525	600	675
D mm	800	860	1075	1100
E mm	439	540	636	789
F °	30 ° - 60 °			



Selectietabel voor sw SIDER Swing t.o.v. de lengte van het schip

